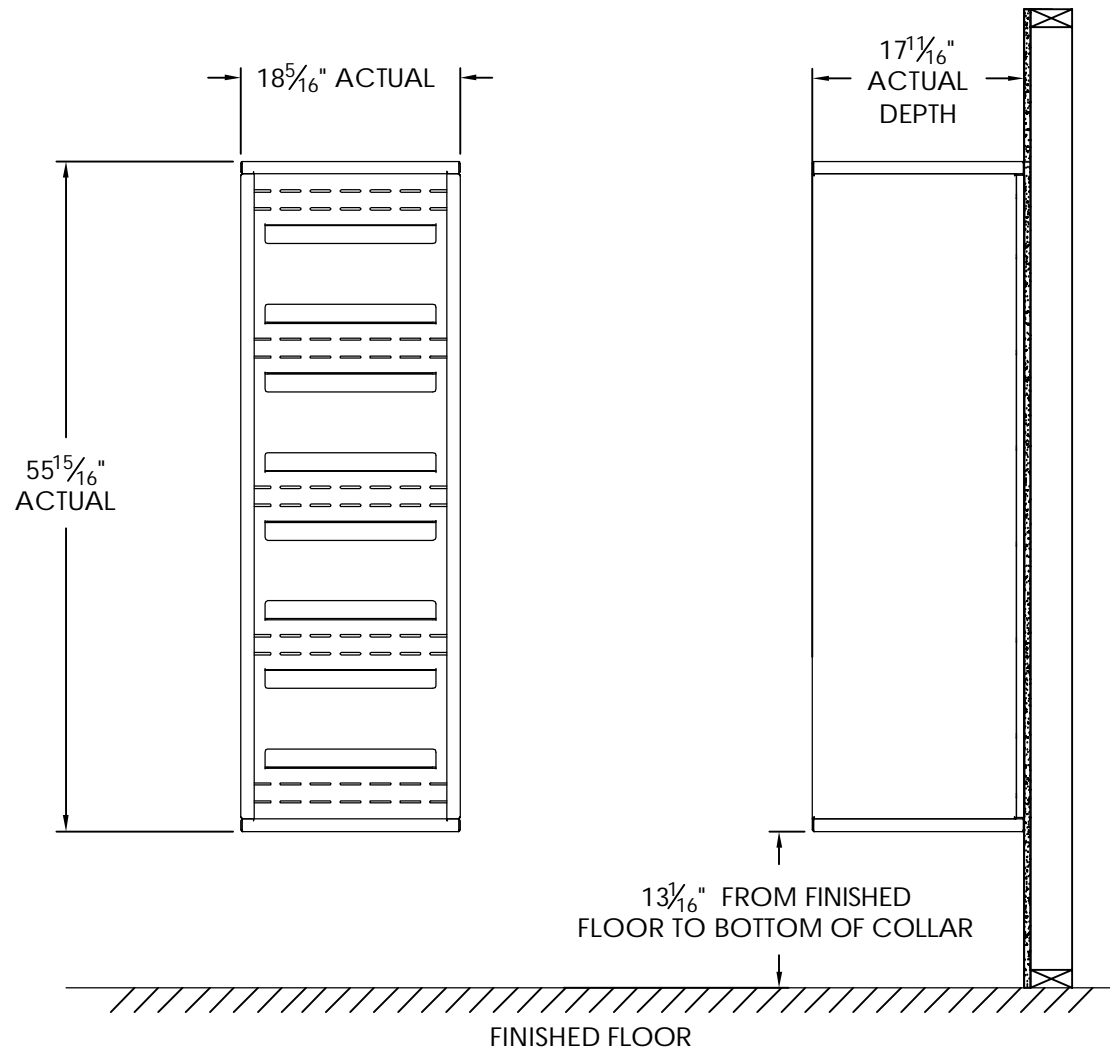


versatile™ 4C Surface Mount Collar, SM15S



Notes:

1. Designed to mount Florence Versatile™ 4C mailbox single column 15-High Suite modules (sold separately).
2. For use with front loading modules only.

PRODUCT SERIES: VERSATILE™ 4C SURFACE MOUNT COLLAR

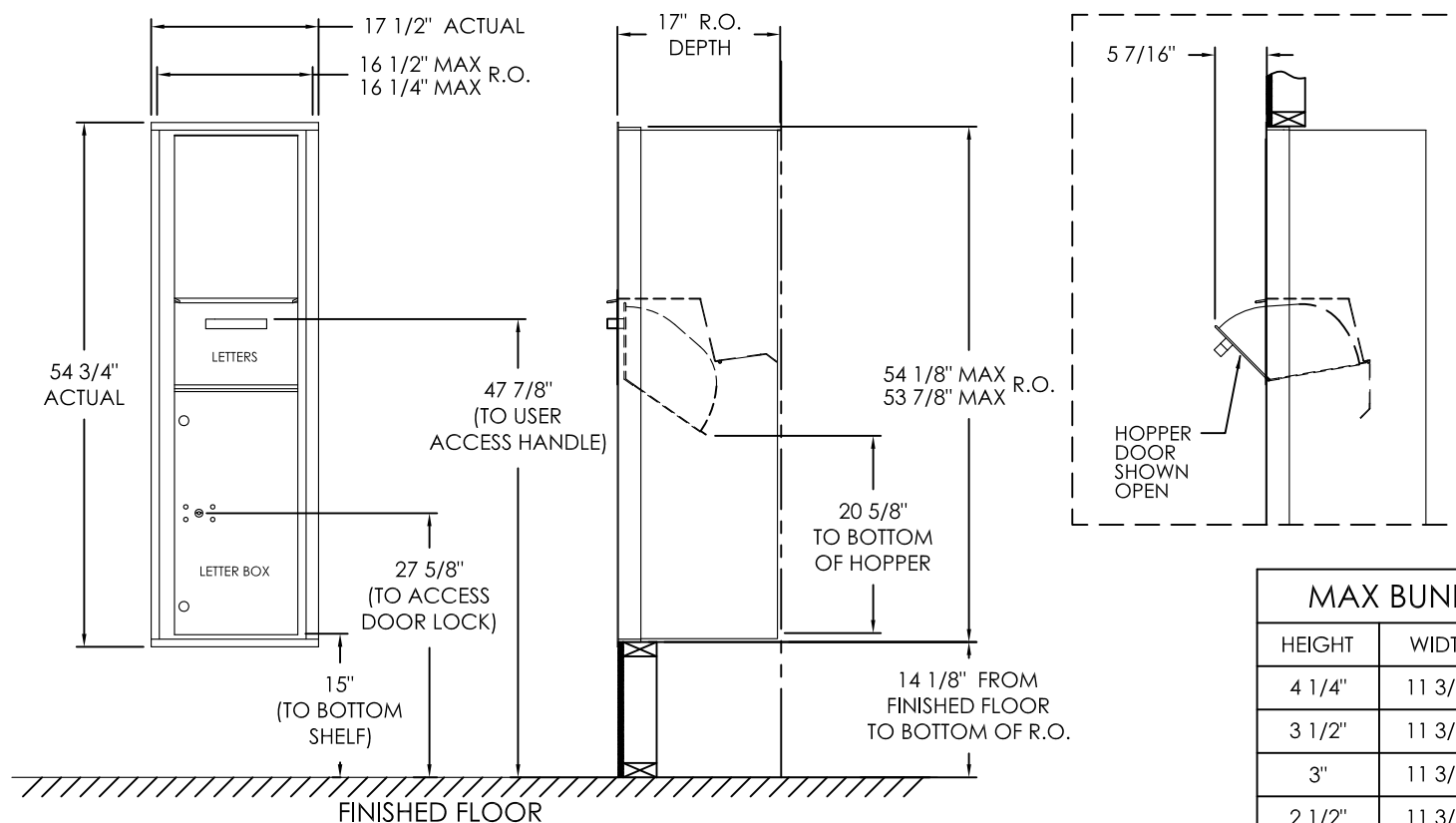
AF FLORENCE
manufacturing company

5935 Corporate Drive • Manhattan, KS 66503
www.florencemailboxes.com • (800) 275-1747

A GIBRALTAR INDUSTRIES COMPANY

MODEL	SM15S	REV	B
SCALE	NONE	LAST REV DATE	7/02/2014
DRAWING NUMBER	SM15SCS	DRAWN BY	TNS

versatile™ 4C Collection Box, 4C15S-HOP



MAX BUNDLE SIZE		
HEIGHT	WIDTH	LENGTH
4 1/4"	11 3/8"	6 1/4"
3 1/2"	11 3/8"	11 1/2"
3"	11 3/8"	14 3/4"
2 1/2"	11 3/8"	14 3/4"

NOTES:

1. 4C Collection boxes are USPS Approved.
2. Module may be recessed, surface, or pedestal mounted and coordinates with Florence versatile™ 4C mailbox modules, see installation manual for details.
3. Collection Box compartment size is 20 5/8" H x 12" W x 15"D.
4. Fixed top panel is for security purposes and is not usable.

PRODUCT SERIES: VERSATILE™ 4C COLLECTION BOX

FLORENCE
CORPORATION

5935 Corporate Drive • Manhattan, KS 66503
 800.275.1747 • www.florencemailboxes.com

MODEL 4C15S-HOP	REV E
SCALE NONE	LAST REV DATE 07/08/19
DRAWING NUMBER 4C15S-HOPCS	DRAWN BY RAK